

Performing Arts - RSL Level 3 Diploma

Subject Information

- RSL Level 3 Diploma

RSL run a range of Creative subjects which are aimed at preparing students for entry into the Creative Industries. This course is graded at Distinction*, Distinction, Merit, Pass and the emphasis is placed on practical work accompanied by a portfolio of knowledge which can be presented in a variety of ways. This qualification is worth the equivalent of one and a half A levels and the equivalent amount of points on UCAS applications.

- Module structure

The course is split into six internally assessed units and one externally assessed unit. The internal units are assessed through your practical work and portfolio of knowledge for each unit, these units are then marked by your class tutor and verified by the exam board. The external unit is split between practical work and research which are completed under controlled conditions. This work is then marked externally by the exam board.



@SHS_Sixth_Form



www.shoeburynesshigh.co.uk

Performing Arts - RSL Level 3 Diploma

Subject Information

- **Units studied**
 - **Performance Preparation** – Externally assessed
Working to a brief by preparing audition material ready for a performance.
 - **Planning for a Career in the Creative and Performing Arts**
Investigate the industry and jobs available while preparation application material.
 - **Musical Theatre Performance**
Performance of a Musical Theatre show.
 - **Solo Music Performance**
Developing vocal skills and performing a solo song.
 - **Ensemble Music Performance**
Working as a group committee to prepare a showcase in which you will also perform a group song.
 - **Audition Techniques**
Preparing acting material for an audition; monologues, sight reading, improvisation and an interview.
 - **Ensemble Dance Performance**
Developing dance skills while learning a group number and choreographing your own routines.



@SHS_Sixth_Form



www.shoeburynesshigh.co.uk

Subject Title & Level

Entry requirements

Pathway 2 entry requirements: 5 GCSEs (or equivalent) at Grade 4/Level 2 Pass and above

Subject entry requirements:

- BTEC level 2 in Performing Arts (Musical Theatre or Acting) or a GCSE in Drama or Dance is desirable but not essential.
- Experience in dancing, drama or singing will also be taken into account if you have not studied one of these subject in year 11.



@SHS_Sixth_Form



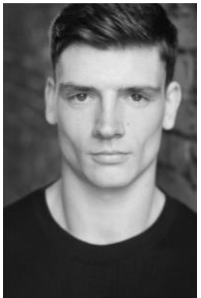
www.shoeburynesshigh.co.uk

Subject Title & Level

Career Progression

Many of our students have continued into careers within the Creative Industry, ranging from performers in musicals, holiday performers, runners and producers in TV and film, apprenticeships at local theatres, cruise ship performers, TV actors, entrepreneurs of performance troupes and teachers.

There are many options for careers not only performing but behind the scenes as well.



Jamie Lee Harris

- Ensemble and Dance Captain – Bodyguard, German Tour, UK tour and Asia Tour
- Ensemble – Dick Whittingham, London Palladium
- Joseph's Brother 0 Joseph and the Amazing Technicolour Dreamcoat



Charlie Mayes

- Producer – TOWIE
- Casting Director – Family Fortunes
- Runner for Ant and Dec on Saturday Night Take Away
- Runner – Dancing on Ice



@SHS_Sixth_Form



www.shoeburynesshigh.co.uk

Subject Title & Level

University Progression

There is a multitude of university courses that give a wide range of opportunities within the Creative industry. You can choose to study musical theatre or specialise within one of the disciplines of acting, singing or dancing.

There are also numerous music courses that would allow you to focus on singing and develop skills in song writing or music production.

If you would like to study technical production there is a wide range of courses available including scenic design, stage management, theatre management, and sound design.

There are many universities who deliver a range of performing arts courses in which you will achieve a BA hons degree. There are also a range of Performing Arts colleges where you can study in a vocational setting but they are linked to a university, enabling you to achieve a degree qualification.



@SHS_Sixth_Form



www.shoeburynesshigh.co.uk

Subject Title & Level

Contact Information

Head of Subject: Mrs H Young

hyoung@shoeburyness.southend.sch.uk

Head of Faculty: Mr E Harper

eharper@shoeburyness.southend.sch.uk



@SHS_Sixth_Form



www.shoeburynesshigh.co.uk