

Shoeburyness High School

Sixth Form Subject Information

Health and Social Care

OCR Level 3 Extended Certificate



@SHS_Sixth_Form



www.shoeburynesshigh.co.uk

Health and Social Care Level 3

Subject Information

- OCR Level 3 Extended Certificate
- Health and Social Care is about developing knowledge and understanding of health, social care and child care environments and helps you to understand the requirements to work in these settings



@SHS_Sixth_Form



www.shoeburynesshigh.co.uk

Health and Social Care Level 3

Subject Information

Module structure:

Over the two years you will cover the following content:

Unit 1: Building positive relationships – coursework unit

Unit 2 : Equality, diversity and rights – external examination

Unit 3 : Health, safety and security - external examination

Unit 4 : Anatomy and Physiology - external examination

Unit 24 : Public Health – coursework unit

Unit 13: Sexual health, reproduction & early development stages – coursework unit



@SHS_Sixth_Form

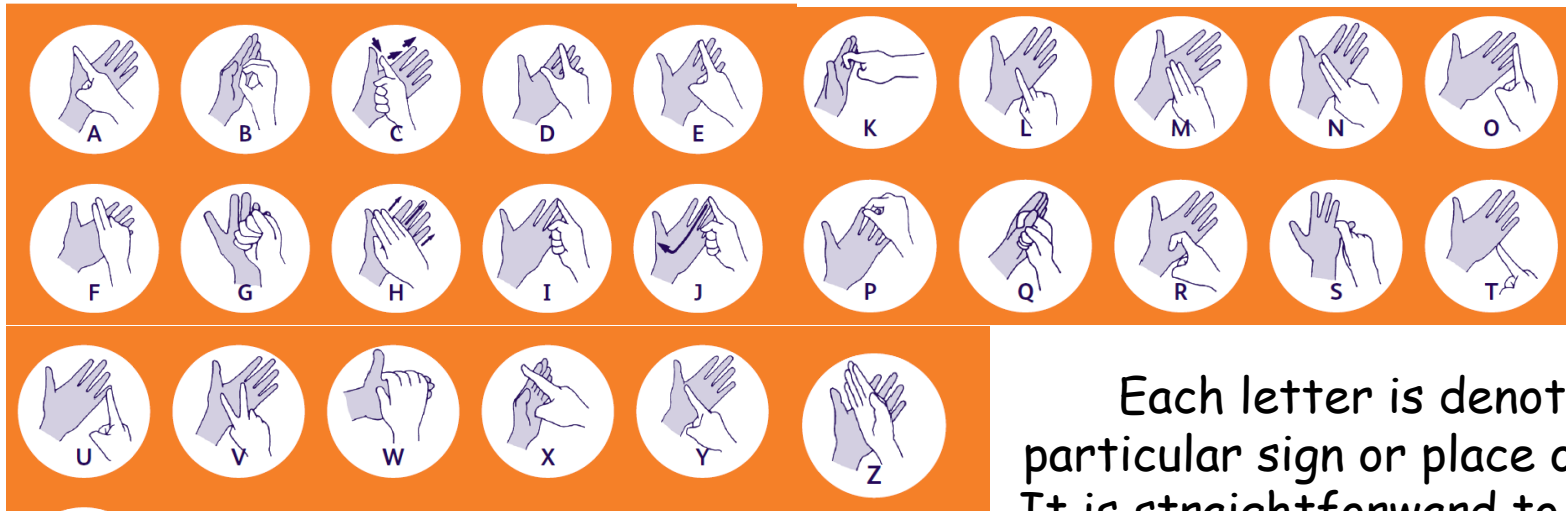


www.shoeburynesshigh.co.uk

Health and Social Care Level 3

Subject Information

Example subject content – Unit 1



The deafblind manual alphabet is a method of spelling out words onto a deafblind person's hand.

Each letter is denoted by a particular sign or place on the hand. It is straightforward to learn but is more complex to receive. Can you learn to spell your name?



@SHS_Sixth_Form



www.shoeburynesshigh.co.uk

Health and Social Care Level 3

Subject Information

Example subject content – Unit 2

Rights

Look at the pictures below and identify which right each links to.
You will need tell me one thing/example linked with that right



@SHS_Sixth_Form



www.shoeburynesshigh.co.uk

Health and Social Care Level 3

Subject Information

Example subject content – Unit 3

Harm and Abuse

Types of Abuse

Understand potential hazards in health, social care and child care environments

Possible effects for abusers of abuse in care environments:

- Having to attend training or be re-trained
- Disciplinary action
- Suspension
- Dismissal
- Being sued for negligence – financial loss
- Criminal prosecution
- Imprisonment
- Loss of professional status – nurses, teachers, doctors, social workers
- School could be placed in special measures by Ofsted
- Care or health environment could be fined or closed down by the CQC.

Possible effects of abuse in care environments for individuals who have experienced abuse:

- Anger
- Anxiety
- Death
- Denial
- Depression
- Disempowerment
- Embarrassment
- Fear
- Feeling betrayed
- Financial hardship
- Illness, health deterioration
- Injury
- Lack of sleep
- Loss of confidence
- Loss of trust
- Low self-esteem
- Self-blame
- Self-harm
- Suicidal feelings
- Becoming withdrawn.

Intentional/unintentional abuse



@SHS_Sixth_Form



www.shoeburynesshigh.co.uk

Health and Social Care Level 3

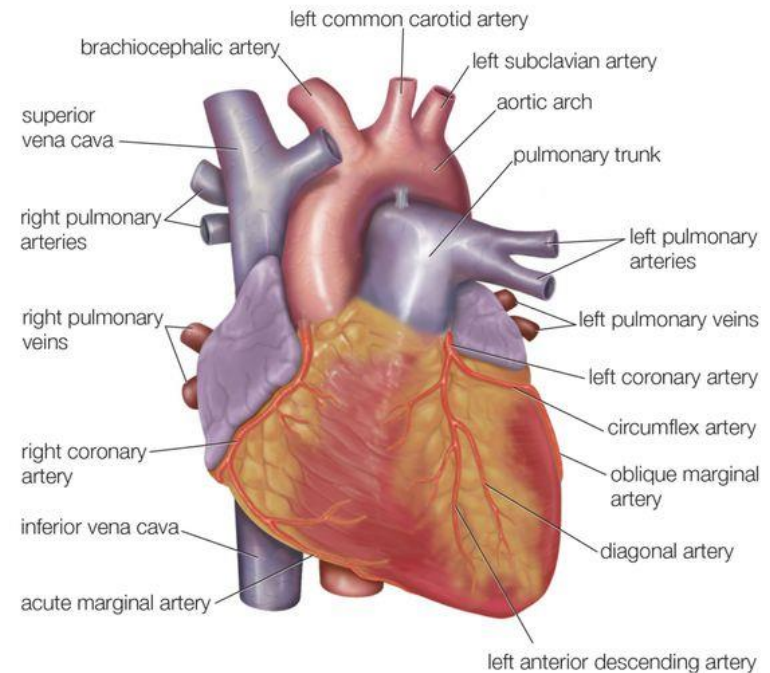
Subject Information

Example subject content – Unit 4

The heart is the organ that helps supply blood and oxygen to all parts of the body. It is divided by a partition or septum into two halves, and the halves are in turn divided into four chambers.

The heart is situated within the chest cavity and surrounded by a fluid filled sac called the pericardium. This amazing muscle produces electrical impulses that cause the heart to contract, pumping blood throughout the body.

The heart and the circulatory system together form the cardiovascular system.



@SHS_Sixth_Form



www.shoeburynesshigh.co.uk

Health and Social Care Level 3

Subject Information

Example subject content – Unit 24

Key terms

1. **Alcoholism:** An addiction where a person drinks alcohol excessively, above the NHS recommended intake.
2. **Binge drinking:** Drinking large volumes of alcohol in a short space of time or drinking to get drunk.
3. **Birth rate:** The total number of live births per 1,000 of a population in a year.
4. **Chlamydia:** A bacterial infection which is one of the most common sexually transmitted infections in the UK.
5. **Death rate:** The total number of deaths per 1,000 of a population in a given period, for example a year.



@SHS_Sixth_Form



www.shoeburynesshigh.co.uk

Health and Social Care Level 3

Subject Information

Example subject content – Unit 13

What can you remember from child development or your own knowledge?

What is being shown in these pictures?



@SHS_Sixth_Form



www.shoeburynesshigh.co.uk

Health and Social Care Level 3

Entry requirements

Pathway 2 entry requirements: 5 GCSEs (or equivalent) at Grade 4/Level 2 Pass and above

Subject entry requirements: 5+ GCSEs at grade 4+ (pathway 3 requirements)



@SHS_Sixth_Form



www.shoeburynesshigh.co.uk

Health and Social Care Level 3

Career Progression

The course can lead to careers such as nursing, teaching, midwifery, paramedic science, caring professions and health care professions.



@SHS_Sixth_Form



www.shoeburynesshigh.co.uk

Health and Social Care Level 3

University Progression

Many of our students go on to study courses related to Health and Social Care at University.

Some examples of these are paramedic science, nursing and midwifery.



@SHS_Sixth_Form



www.shoeburynesshigh.co.uk

Health and Social Care Level 3

Contact Information

Head of Subject: Mrs K Allum

kallum@shoeburyness.southend.sch.uk

Head of Faculty: Mrs K Andrews

kandrews@shoeburyness.southend.sch.uk



@SHS_Sixth_Form



www.shoeburynesshigh.co.uk